



element14

EN - For pricing and availability in your local country please visit one of the below links:

DE - Informationen zu Preisen und Verfügbarkeit in Ihrem Land erhalten Sie über die unten aufgeführten Links:

FR - Pour connaître les tarifs et la disponibilité dans votre pays, cliquez sur l'un des liens suivants:

[SEMIX 101GD126HDS](#)

EN

This Datasheet is presented by
the manufacturer

DE

Dieses Datenblatt wird vom
Hersteller bereitgestellt

FR

Cette fiche technique est
présentée par le fabricant

SEMiX101GD126HDs



SEMiX[®] 13

Trench IGBT Modules

SEMiX101GD126HDs

Features

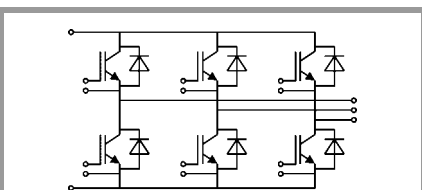
- Homogeneous Si
- Trench = Trenchgate technology
- $V_{CE(sat)}$ with positive temperature coefficient
- High short circuit capability
- UL recognised file no. E63532

Typical Applications*

- AC inverter drives
- UPS
- Electronic Welding

Remarks

- Case temperatur limited to $T_C=125^{\circ}\text{C}$ max.
- Not for new design



GD

Absolute Maximum Ratings				
Symbol	Conditions	Values	Unit	
IGBT				
V_{CES}		1200	V	
I_C	$T_j = 150^{\circ}\text{C}$	$T_c = 25^{\circ}\text{C}$	129	A
		$T_c = 80^{\circ}\text{C}$	91	A
I_{Cnom}		75	A	
I_{CRM}	$I_{CRM} = 2 \times I_{Cnom}$	150	A	
V_{GES}		-20 ... 20	V	
t_{psc}	$V_{CC} = 600\text{ V}$ $V_{GE} \leq 20\text{ V}$ $V_{CES} \leq 1200\text{ V}$	$T_j = 125^{\circ}\text{C}$	10	μs
T_j		-40 ... 150	$^{\circ}\text{C}$	
Inverse diode				
I_F	$T_j = 150^{\circ}\text{C}$	$T_c = 25^{\circ}\text{C}$	117	A
		$T_c = 80^{\circ}\text{C}$	81	A
I_{Fnom}		75	A	
I_{FRM}	$I_{FRM} = 2 \times I_{Fnom}$	150	A	
I_{FSM}	$t_p = 10\text{ ms}$, $\sin 180^{\circ}$, $T_j = 25^{\circ}\text{C}$	600	A	
T_j		-40 ... 150	$^{\circ}\text{C}$	
Module				
$I_{t(RMS)}$		600	A	
T_{stg}		-40 ... 125	$^{\circ}\text{C}$	
V_{isol}	AC sinus 50Hz, $t = 1\text{ min}$	4000	V	

Characteristics					
Symbol	Conditions	min.	typ.	max.	Unit
IGBT					
$V_{CE(sat)}$	$I_C = 75\text{ A}$ $V_{GE} = 15\text{ V}$ chipelevel	$T_j = 25^{\circ}\text{C}$	1.7	2.1	V
		$T_j = 125^{\circ}\text{C}$	2	2.45	V
V_{CE0}		$T_j = 25^{\circ}\text{C}$	1	1.2	V
		$T_j = 125^{\circ}\text{C}$	0.9	1.1	V
r_{CE}	$V_{GE} = 15\text{ V}$	$T_j = 25^{\circ}\text{C}$	9.3	12.0	$\text{m}\Omega$
		$T_j = 125^{\circ}\text{C}$	14.7	18.0	$\text{m}\Omega$
$V_{GE(th)}$	$V_{GE}=V_{CE}$, $I_C = 3\text{ mA}$	5	5.8	6.5	V
I_{CES}	$V_{GE} = 0\text{ V}$ $V_{CE} = 1200\text{ V}$	$T_j = 25^{\circ}\text{C}$	0.1	0.3	mA
		$T_j = 125^{\circ}\text{C}$			mA
C_{ies}	$V_{CE} = 25\text{ V}$		5.3		nF
C_{oes}	$V_{GE} = 0\text{ V}$		0.28		nF
C_{res}			0.24		nF
Q_G	$V_{GE} = -8\text{ V...}+15\text{ V}$		600		nC
R_{Gint}	$T_j = 25^{\circ}\text{C}$		10.00		Ω
$t_{d(on)}$	$V_{CC} = 600\text{ V}$	$T_j = 125^{\circ}\text{C}$	225		ns
t_r	$I_C = 75\text{ A}$	$T_j = 125^{\circ}\text{C}$	40		ns
		$T_j = 125^{\circ}\text{C}$			
E_{on}	$R_{G on} = 2\ \Omega$	$T_j = 125^{\circ}\text{C}$	10		mJ
$t_{d(off)}$	$R_{G off} = 2\ \Omega$	$T_j = 125^{\circ}\text{C}$	470		ns
t_f		$T_j = 125^{\circ}\text{C}$	85		ns
		$T_j = 125^{\circ}\text{C}$			
E_{off}		$T_j = 125^{\circ}\text{C}$	11		mJ
$R_{th(j-c)}$	per IGBT			0.27	K/W

SEMiX101GD126HDs



SEMiX[®] 13

Trench IGBT Modules

SEMiX101GD126HDs

Features

- Homogeneous Si
- Trench = Trenchgate technology
- $V_{CE(sat)}$ with positive temperature coefficient
- High short circuit capability
- UL recognised file no. E63532

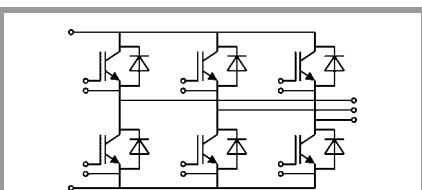
Typical Applications*

- AC inverter drives
- UPS
- Electronic Welding

Remarks

- Case temperatur limited to $T_C=125^\circ\text{C}$ max.
- Not for new design

Characteristics						
Symbol	Conditions		min.	typ.	max.	Unit
Inverse diode						
$V_F = V_{EC}$	$I_F = 75\text{ A}$ $V_{GE} = 0\text{ V}$ chip	$T_j = 25^\circ\text{C}$		1.6	1.80	V
		$T_j = 125^\circ\text{C}$		1.6	1.8	V
V_{F0}		$T_j = 25^\circ\text{C}$	0.9	1	1.1	V
		$T_j = 125^\circ\text{C}$	0.7	0.8	0.9	V
r_F		$T_j = 25^\circ\text{C}$	6.7	8.0	9.3	m Ω
		$T_j = 125^\circ\text{C}$	9.3	10.7	12.0	m Ω
I_{RRM}	$I_F = 75\text{ A}$	$T_j = 125^\circ\text{C}$		97		A
Q_{rr}	$di/dt_{off} = 2240\text{ A}/\mu\text{s}$	$T_j = 125^\circ\text{C}$		20		μC
E_{rr}	$V_{GE} = -15\text{ V}$ $V_{CC} = 600\text{ V}$	$T_j = 125^\circ\text{C}$		9		mJ
$R_{th(j-c)}$	per diode				0.46	K/W
Module						
L_{CE}				20		nH
$R_{CC'+EE'}$	res., terminal-chip	$T_C = 25^\circ\text{C}$		0.7		m Ω
		$T_C = 125^\circ\text{C}$		1		m Ω
$R_{th(c-s)}$	per module			0.04		K/W
M_s	to heat sink (M5)		3		5	Nm
M_t		to terminals (M6)	2.5		5	Nm
						Nm
w					350	g
Temperatur Sensor						
R_{100}	$T_C=100^\circ\text{C}$ ($R_{25}=5\text{ k}\Omega$)			$493 \pm 5\%$		Ω
$B_{100/125}$	$R_{(T)}=R_{100}\exp[B_{100/125}(1/T-1/T_{100})]$; $T[\text{K}]$;			3550 $\pm 2\%$		K



GD

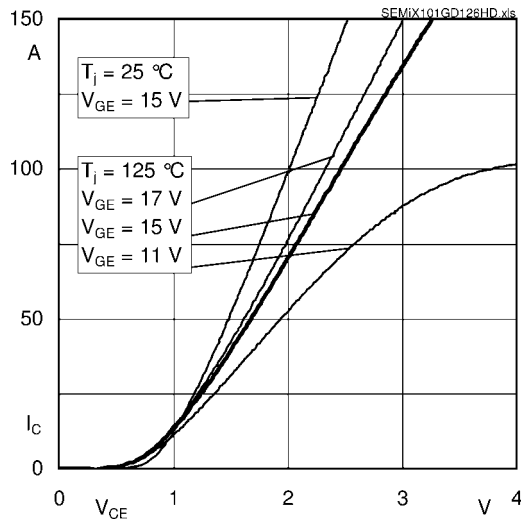


Fig. 1: Typ. output characteristic, inclusive $R_{CC'+EE'}$

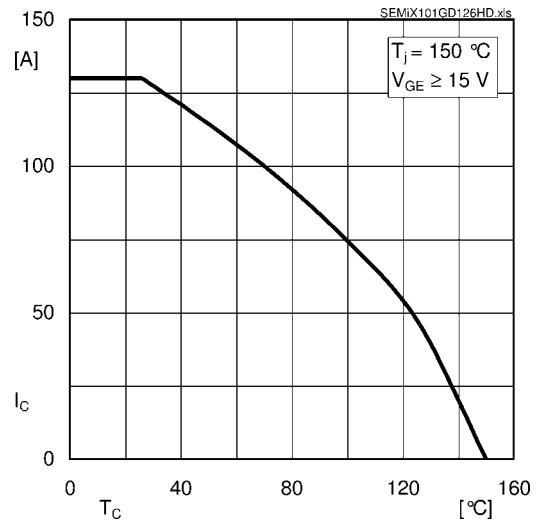


Fig. 2: Rated current vs. temperature $I_C = f(T_C)$

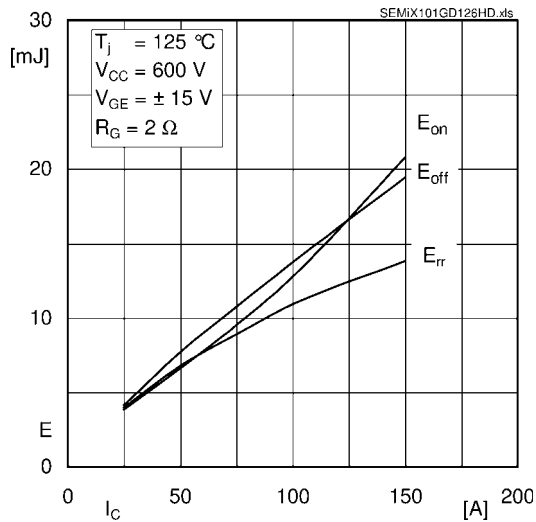


Fig. 3: Typ. turn-on /-off energy = $f(I_C)$

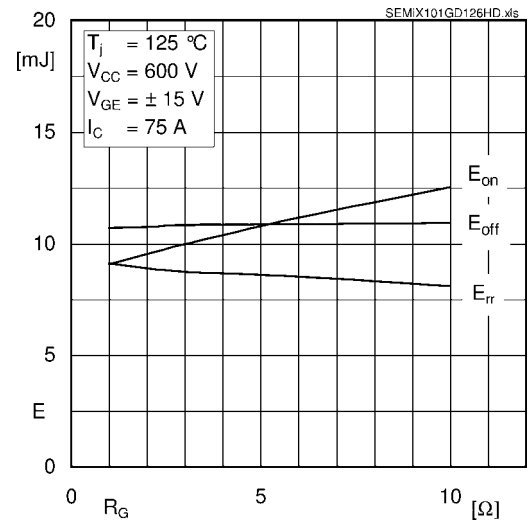


Fig. 4: Typ. turn-on /-off energy = $f(R_G)$

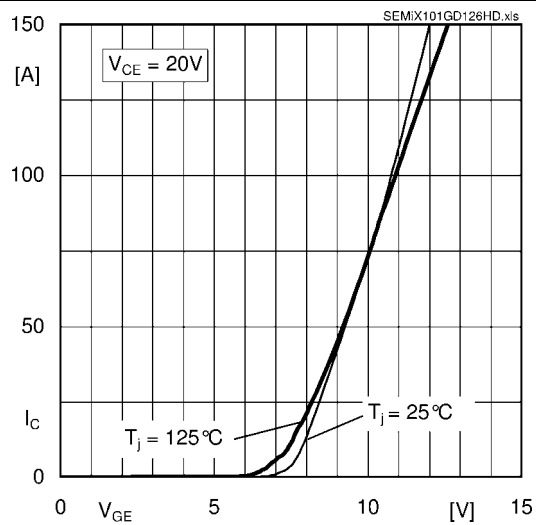


Fig. 5: Typ. transfer characteristic

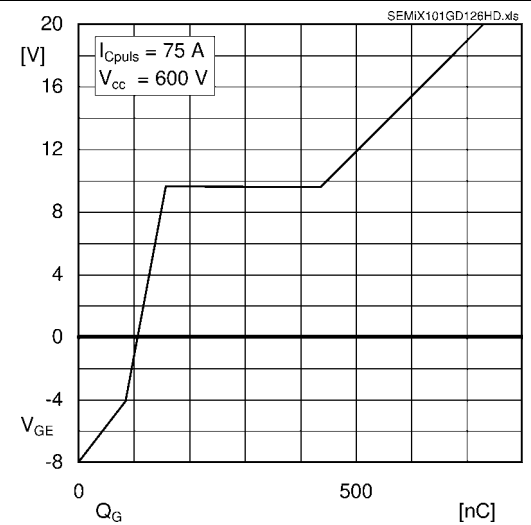


Fig. 6: Typ. gate charge characteristic

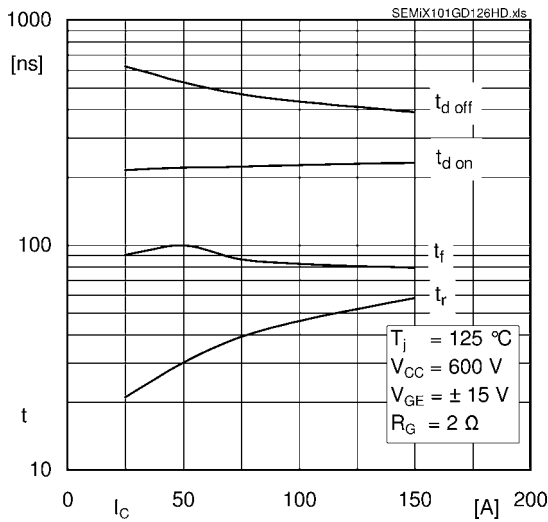


Fig. 7: Typ. switching times vs. I_C

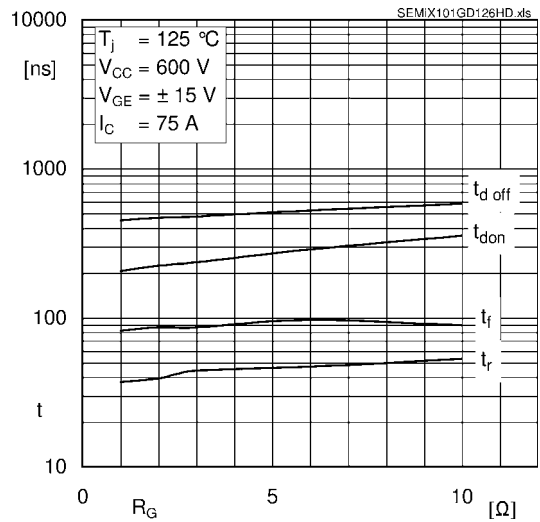


Fig. 8: Typ. switching times vs. gate resistor R_G

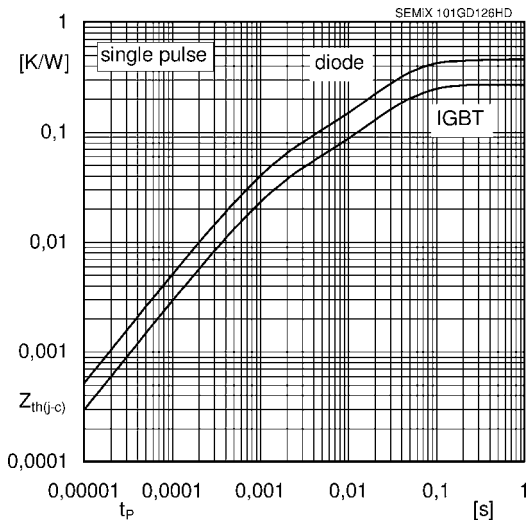


Fig. 9: Typ. transient thermal impedance

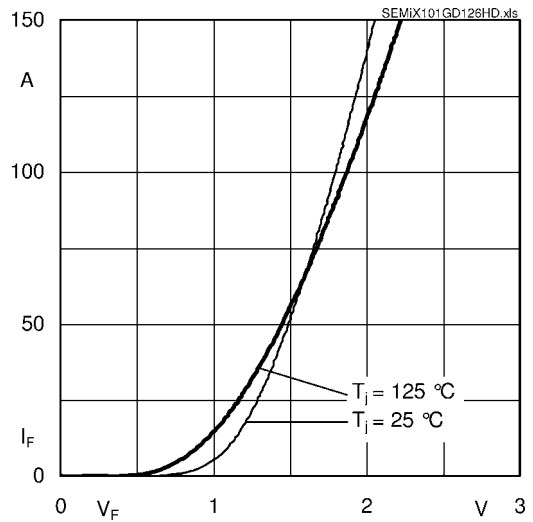


Fig. 10: Typ. CAL diode forward charact., incl. $R_{CC+EE'}$

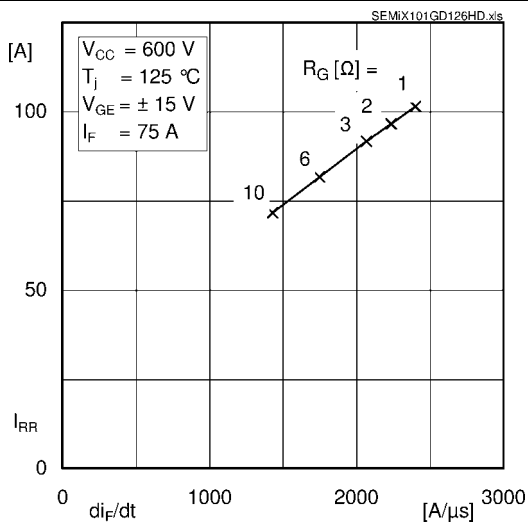


Fig. 11: Typ. CAL diode peak reverse recovery current

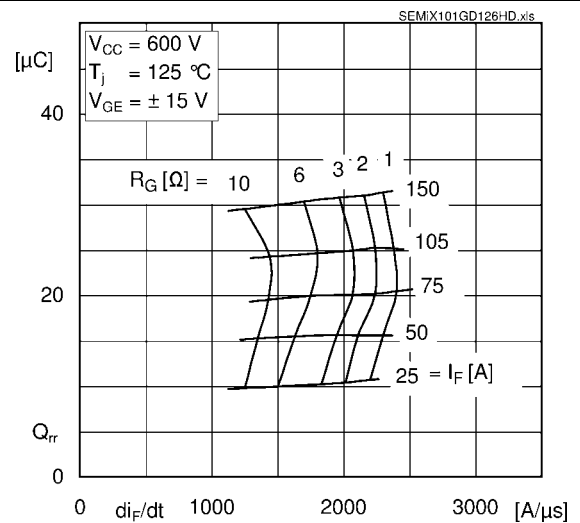
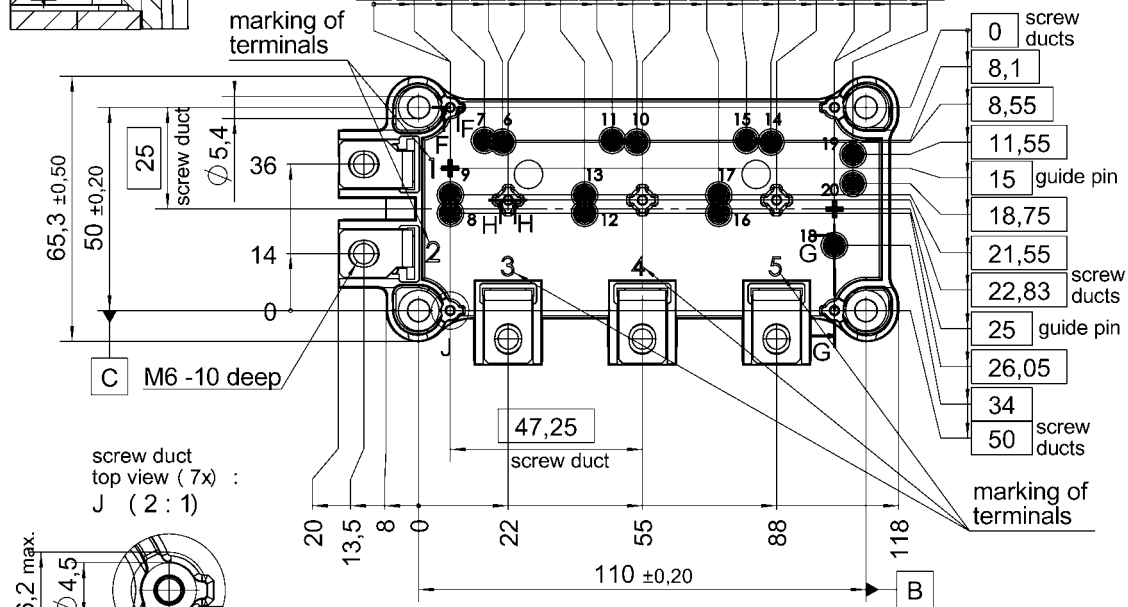
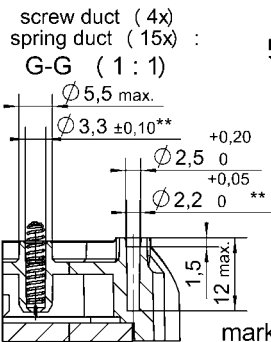
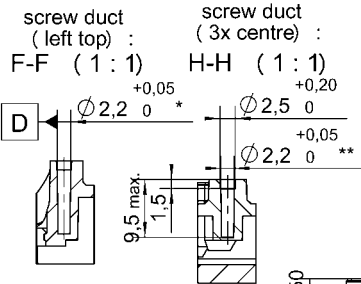


Fig. 12: Typ. CAL diode recovery charge

SEMiX101GD126HDs

Case: SEMiX 13



general tolerance: ISO 2768-mK ISO 8015

All measures in Z-direction valid when mounted to heat sink

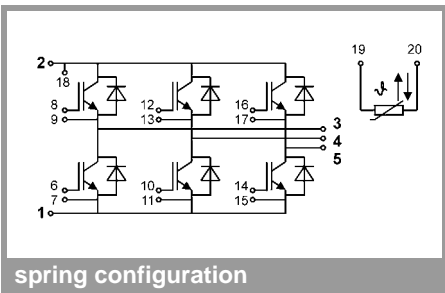
*screw duct left / top with $\phi 0,2$ A B C

**screw ducts / guide pins / spring ducts with $\phi 0,2$ A D C

Rules for the contact PCB:

- holes guidepins = $\phi 4 \pm 0,1$ / position tolerance $\pm 0,1$
- holes for screws = $\phi 2,9 \pm 0,1$ / position tolerance $\pm 0,1$
- spring contact pad = $\phi 3,6 \pm 0,1$ / position tolerance $\pm 0,1$

SEMiX 13



This is an electrostatic discharge sensitive device (ESDS), international standard IEC 60747-1, Chapter IX

* The specifications of our components may not be considered as an assurance of component characteristics. Components have to be tested for the respective application. Adjustments may be necessary. The use of SEMIKRON products in life support appliances and systems is subject to prior specification and written approval by SEMIKRON. We therefore strongly recommend prior consultation of our personal.



element14

EN - For pricing and availability in your local country please visit one of the below links:

DE - Informationen zu Preisen und Verfügbarkeit in Ihrem Land erhalten Sie über die unten aufgeführten Links:

FR - Pour connaître les tarifs et la disponibilité dans votre pays, cliquez sur l'un des liens suivants:

[SEMIX 101GD126HDS](#)

EN

This Datasheet is presented by
the manufacturer

DE

Dieses Datenblatt wird vom
Hersteller bereitgestellt

FR

Cette fiche technique est
présentée par le fabricant